

The Mississippi Partnership Workforce Development Area

A Division of Three Rivers Planning & Development District

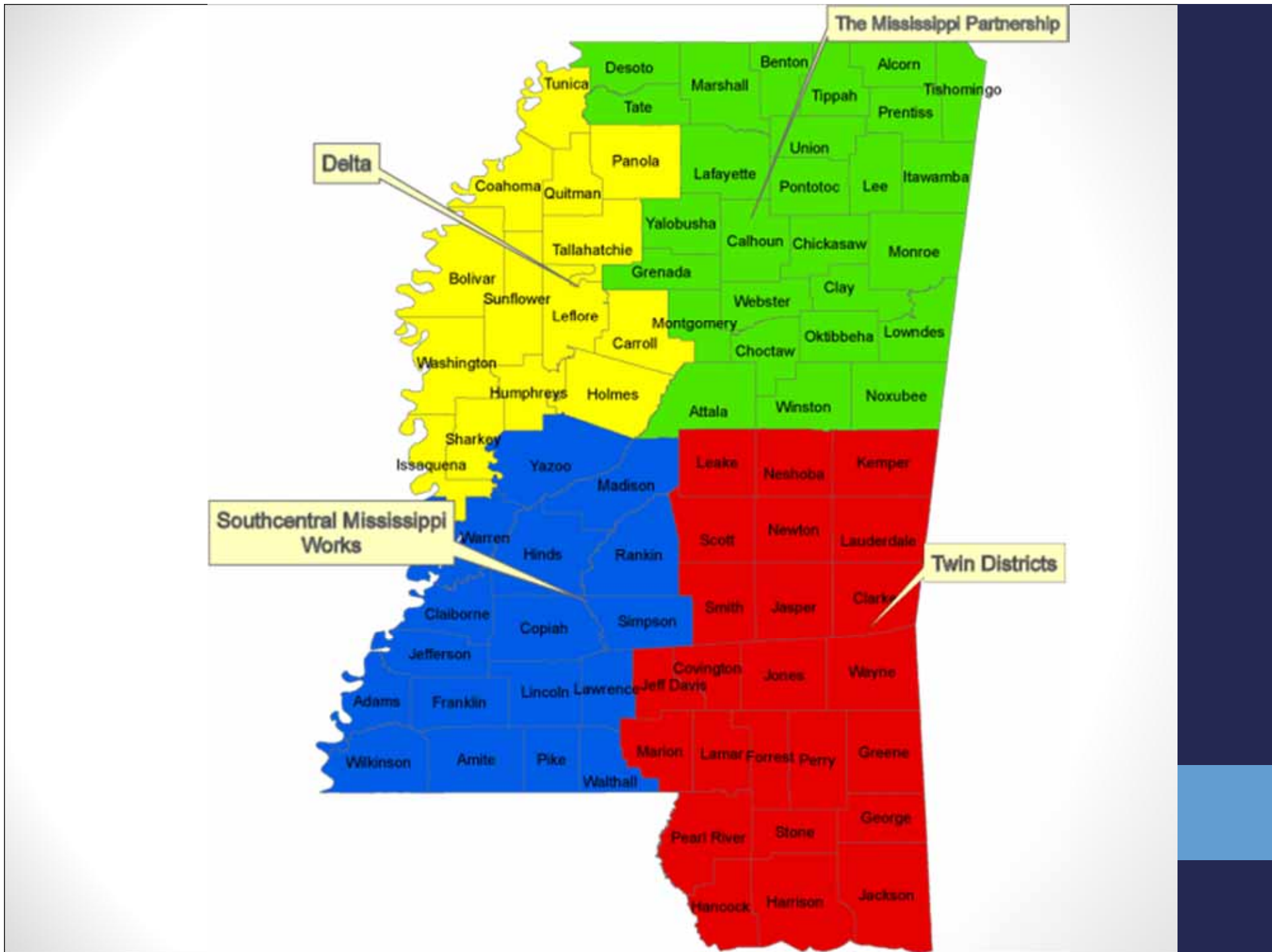
Presented by:
Gary Golden



Who we are:



- Three Rivers PDD is the fiscal/administrative agent for the Mississippi Partnership.
- The Mississippi Partnership is one of four workforce areas in the State of Mississippi created for the purpose of providing activities authorized by the Workforce Innovation and Opportunity Act of 2014 (WIOA).
- We have 17 WIN Job Centers and 6 Youth Providers who provide services to our customers, both job seekers and employers.



The Mississippi Partnership Local Workforce Board

- The Mississippi Partnership Local Workforce Development Board members guide the development of our program and identify for action the needs of the businesses in our area. The Board structure includes:
 - 12 Business Leaders
 - 2 Education Representatives
 - 1 Economic Developers
 - 1 Community Based Representatives
 - 1 Labor Representatives
 - 6 Partners Representatives (such as Wagner Peyser, HUD, MDRS, MDHS)
- Through close contact with our local economic developers, planning and development districts, and community college partners we are able to discuss the current business climate in our region and to learn what the needs are of our local businesses.



Engagement with Economic Development



- The MS Partnership provides valuable assistance to its economic and community development partners since WIOA was enacted and plays a primary role as the region continues to grow and develop.



- We strive to be creative, innovative, and proactive in regards to the provision of its services and understand the vital role of partnership.



- Our program is designed to present a comprehensive workforce package to our business clients. We believe that this approach is imperative to streamlining services.
- By approaching business with a representative who has knowledge in all of the various services offered through our one-stop system and associated partners, we are working to eliminate multiple contact points offering workforce programs.

Successful economic development is a

TEAM EFFORT

The Mississippi Partnership plays a major role in projects throughout our area. Whether discussing new projects or retention/expansions of existing businesses we are at the table providing pertinent workforce information.

What we are doing to meet the needs of workers and employers

- Listening
- Thinking
- Not scared to rock the boat
- Proposing innovative ideas




On-the-Job
Training
(OJT)

Internship
Program

Engaging Employers through Program Design

employer
services

Individual
Training
Accounts
(ITAs)

C2C

COUNSELING TO
CAREER
Youth
Programs

WIOA Employer Services

- Post job openings
- Recruit job seekers for employers
- Screen applicants to ensure the right workers with the right skills are referred to employers
- Provide office space for interviewing to employers
- Provide training cost reimbursement to employers who hire and train an employee
- Assist companies with Rapid Response services to help manage layoffs

On-the-Job Training (OJT)

OJT is training provided by an employer to a paid participant while engaged in productive work that:



- Provides knowledge or skills essential to the full and adequate performance of the job;
- Provides reimbursement to the employer of up to 50% of the wage rate of the participant
- Is limited in duration as appropriate to the occupation for which the participant is being trained

Internship Program

- Provides meaningful work experience that helps the individual to explore career opportunities or gain meaningful work experience, while providing the employer with a qualified employee.
- The employer must be able to:
 - ✓ Provide a safe workplace
 - ✓ Supervise appropriately
 - ✓ Maintain an open line of communication between the employer, the adult intern, and the WIN Job Center staff
 - ✓ Provide feedback and evaluations of the adult's work performance



Individual Training Account (ITA)

- ITAs are used by individuals to purchase approved training programs, provided by "eligible training providers".
- ITAs are typically used to purchase training in the areas of Nursing, Truck Driving, Tool & Die.
- Most of the training is provided by local community colleges.
- ITAs are limited in amount and duration based on the type of training the individual receives.



C2C



COUNSELING TO CAREER Youth Programs

- Program is for WIOA eligible out-of-school youth ages 16-24
- The goals of this program are to:
 - ✓ Increase the youth's basic skills
 - ✓ Assist the youth with receiving his/her GED, if applicable
 - ✓ Teach the youth Work Ethics
 - ✓ Provide the youth with paid work experience after completing Work Ethics training
 - ✓ Transition the youth into a job, college, advanced training, or the military

How to reach us

THE MISSISSIPPI PARTNERSHIP

THREE RIVERS PDD

BILL RENICK-WIA DIVISION DIRECTOR

662-489-2415

brenick@trpdd.com

